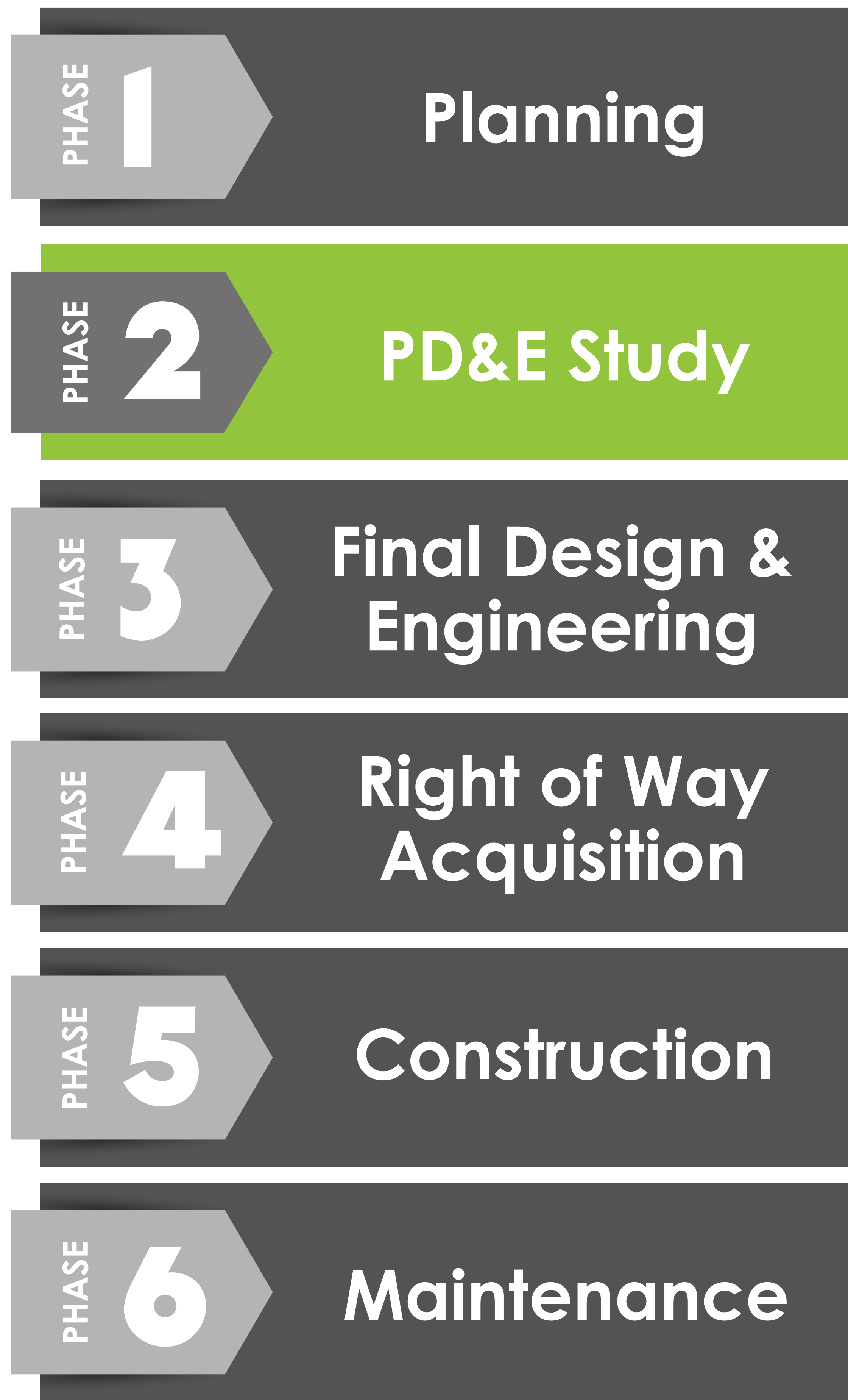


PD&E STUDY PROCESS

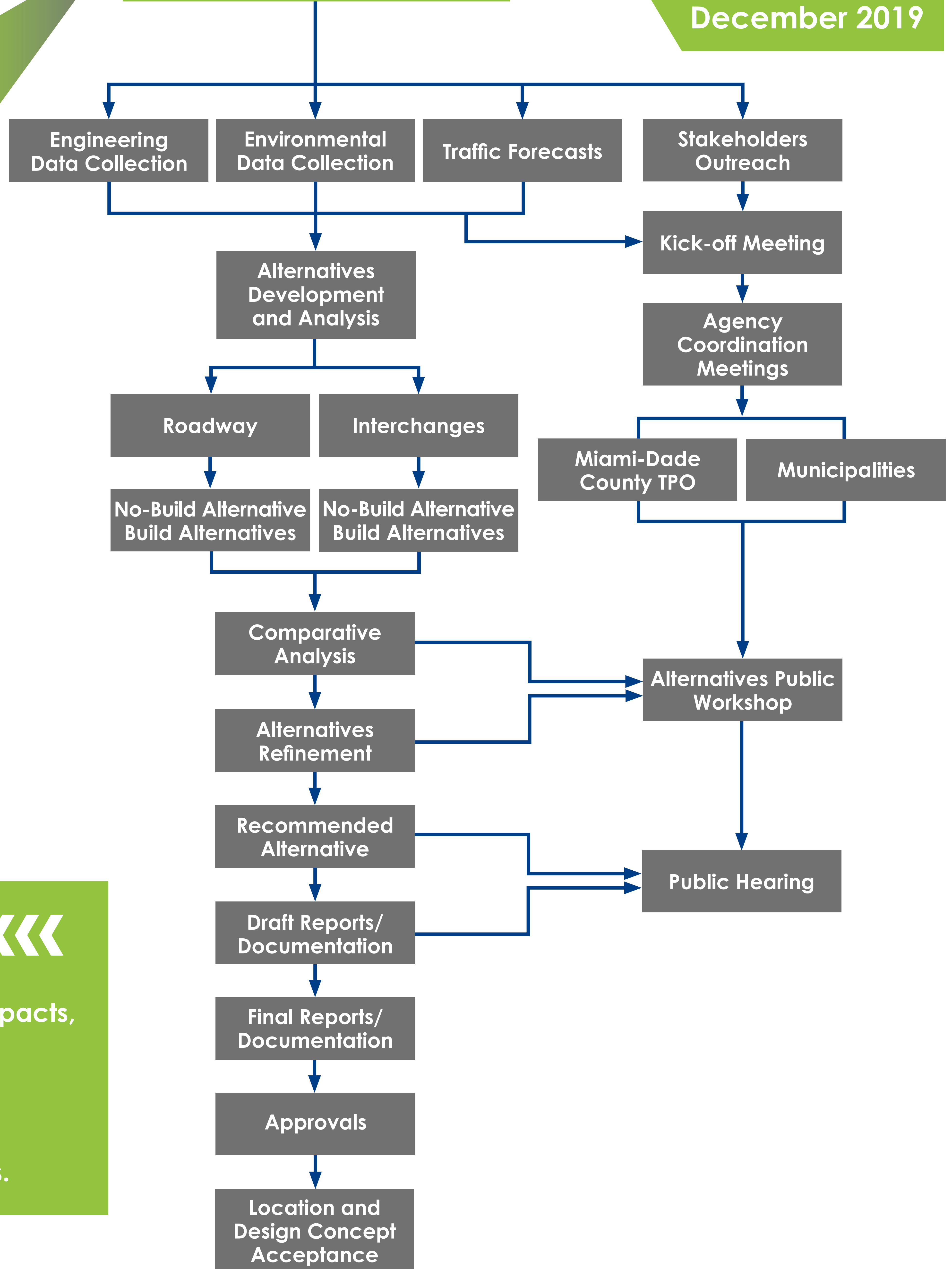
TRANSPORTATION DEVELOPMENT PROCESS



PHASE 2

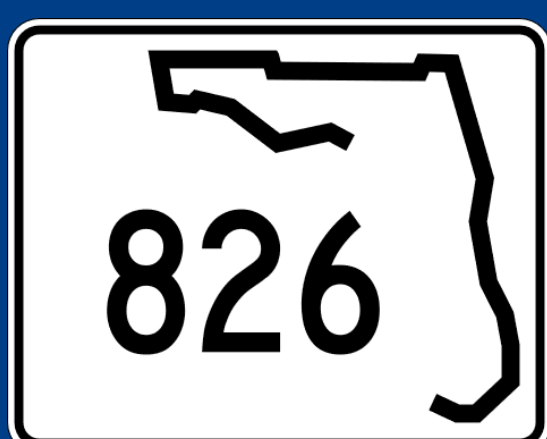
PHASE 2 PD&E Study

Start Date: July 2017
Completion Date: December 2019



WHAT IS A PD&E STUDY?

- Formal process FDOT uses to ensure that consideration is given to environmental impacts, social impacts, public input, engineering design and project costs when evaluating transportation improvements.
- Required in order to satisfy the National Environmental Policy Act (NEPA).
- Essential step in qualifying for federal funds.



SR 826/PALMETTO EXPRESSWAY EXPRESS LANES PD&E STUDY

From US 1/SR 5/Dixie Highway to SR 836/Dolphin Expressway
FPID No.: 432639-1-22-02 • ETDM No.: 14308

